



# Empowering Business through Enterprise Solutions

A value driven technology company that  
understands your business needs

# Godrej Infotech

A value driven technology company that understands your business needs

Godrej Infotech Ltd. is a part of Godrej Enterprises Group which has played a key role in India's economic history by driving excellence in design and manufacturing and delivering sustainable value for its stakeholders and communities. With a revenue of over ₹16,355 crore\* (FY 2024) and over 15,000 committed employees, Godrej Enterprises Group's diverse presence across 10 industries - from complex engineering solutions to consumer goods like storage solutions, furniture and security solutions - positively impacts the lives of one-third of India's population every day. Through international subsidiaries and joint ventures, the company's products have also established a strong global footprint across 5 continents.

Godrej Infotech, in the last 25-years has grown into a formidable force as an end-to-end Technology Service provider having catered to 500+ customers globally. Our industry knowledge in Manufacturing, EPC/Projects, Retail industry and technology offering through our innovative Automation, Cloud & Transformation (ACT) model, ensures creating value for our customers. As a long-term strategic partner for Infor, MS, Oracle, AAI & UiPath we have collaborated with enterprise customers worldwide. Our presence spans across USA, Europe, APAC, Middle East and India.



# Our Strength

## Putting people first

At Godrej Infotech, we value people be it customers or team members. The company boasts of a well-motivated team that comprises of Domain experts who can understand business and developers who are qualified Engineers, MCAs, CAs, ICWAs from reputed institutes.

## Relationship approach

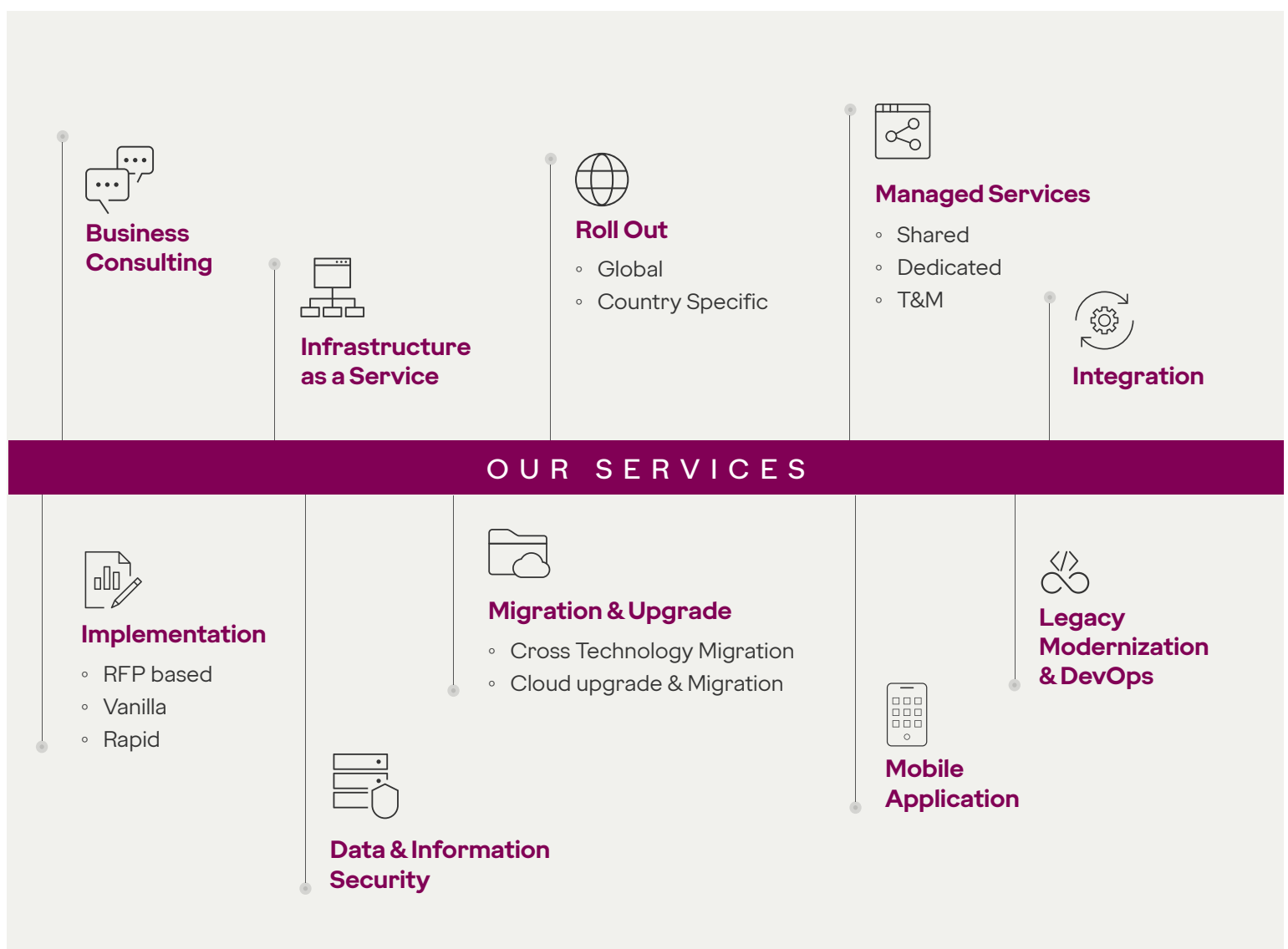
A dedicated special business unit (SBUs) has been created to handle a given project or assignment, thus making us not solution provider but partners in a client's business

## Internal processes

A well-structured organization with well-streamlined internal processes makes GITL a highly reliable service provider to clients looking for quality, dependability, and stability.

## Technology unit capability

Dedicated technology units have been created for Microsoft, Infor and Digital projects with solution architects, subject matter experts, professional project managers and certified consultants.





## Elevate business performance with

# Automation Solutions

### Intelligent Technologies

- AI/ ML/ GPT/ Generative AI/ Data Labelling/ Video Analytics
- RPA (UiPath, Automation Anywhere, Power Automate)
- Tech Stack [Java, .Net, SharePoint, Power Pages,
- Low-Code No-Code (Mendix, Angular JS, Power Apps), DevOps, Bespoke Apps, Legacy and App Modernization] IIOT

### Data Insights & Security

- Data Visualisation (Power BI, BIRST, Tableau)
- Data Management (Azure Data Lake, Amazon S3, MS SQL, Oracle)
- Cybersecurity



## Experience new business

# Dimensions with Cloud

### Move To Cloud

- Upgrade/ Migrate to latest technology
- Microsoft Dynamics 365 (Business Central, Finance & Operations, Commerce)
- Infor CloudSuite, Infor LN Cloud, Infor Cloud WMS,
- HxGN EAM Cloud

### Cloud Services

- Business Apps on Cloud
- Infra Services (IAAS, SAAS, AWS, Azure APIM, Cloud Native)
- M365



## Leverage key drivers of

# Growth with Transformation

### Enterprise Suite

- Infor (CloudSuite, LN, WMS)
- HxGN EAM
- Microsoft D365 (Business Central, Finance & Operations, Commerce)
- LS Central
- Oracle Fusion Cloud

### Customer Experience

- Salesforce CRM
- Microsoft CRM
- Infor CRM
- eCommerce
- LS Retail

# Domain Focus



# Pricing Models



## Fixed Price Model

The customer pays a pre-negotiated fixed price for the complete project, which in turn is linked to clearly defined scope and deliverables.

## Hybrid Model

A major portion of the project is on a Fixed Price basis and at the same time resources are deployed on Time and Material basis. Adopting such a model enables the client to maximize their ROI without compromising any aspect of the project itself.

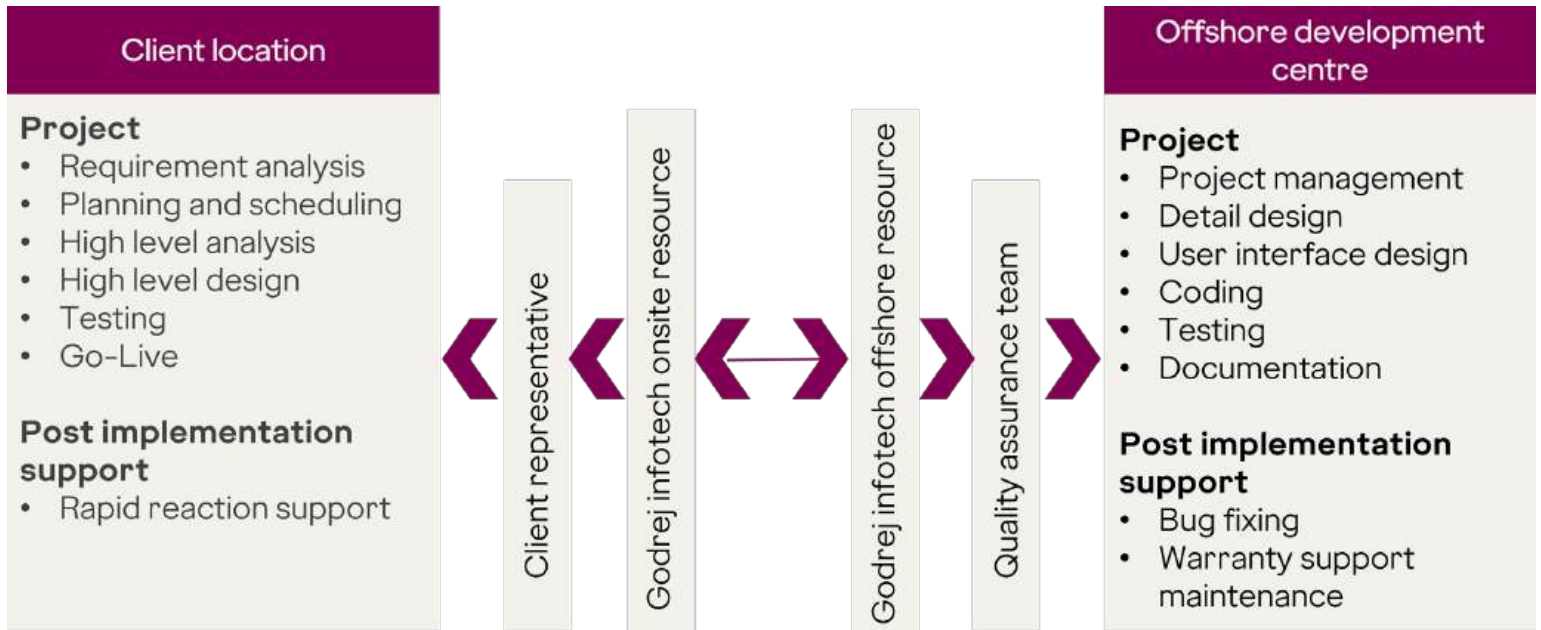
## Time & Material Model

Define the business model & work together with our client. The client pays a predefined hourly/monthly rate.

## Build-Operate Transfer Model

We build an offshore facility for the Customer, Operate the offshore facility & customize it as per customer's needs & when model reaches maturity, we transfer the complete ownership of the facility & resources to the Client.

# Global Delivery Models



# Customer Stories

**8 Years of ongoing Infor managed support services and migration to MT Infor Cloud optimizes operational cost by 25% for Europe based contracting and maritime service provider**

## CUSTOMER INFO.

Operating in 90 Countries, Revenue-USD 4.82 Bn, Employees - 11000+

- Managed services with hybrid engagement model (Onsite & Offshore) across multiple time zones to 350+ entities for Infor applications. Seamlessly integrating multi-application solutions
- Migration across Technologies - SAP, NAV, IFS to Infor LN

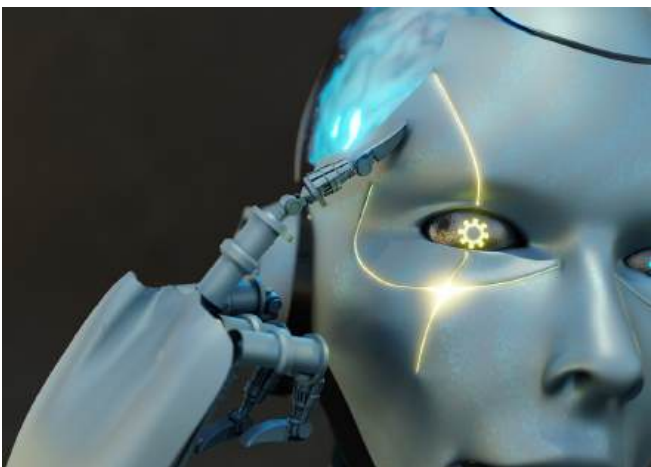


**Embarking on enterprise-wide Digital Transformation journey for leading Indian conglomerate with 14 strategic business units**

## CUSTOMER INFO.

Global presence in 5 Continents, Revenue - USD 1.8 Bn, Employees - 15000

- Infor LN platform manages manufacturing processes for 10,000 users across 120+ locations, handling 20 TB of data
- Deployed 50+ RPA bots, automating processes like item creation, BOM and production orders, resulting in annual cost savings, reduced handling time and 100% accuracy for various business topologies - MTS, MTO, ATO & ETO



**GenAI-Powered Chatbot responds to customer queries from multisource documents for US based material handling solutions provider**

## CUSTOMER INFO.

Revenue - \$3.57Bn, Presence - 30+ countries

- Minimizes help desk workload, building an intuitive corporate knowledge management ecosystem
- Power Platform integration for automated CapEx workflow and budgeting process

## Salesforce Mobile App enhances sales team productivity with real-time information for a leading elevator solutions provider based in Europe

### CUSTOMER INFO.

Revenue - \$161 Mn, Presence: Saudi Arabia

- Middle East fast food chain proactively pursued to enhance its business operations, hence Godrej Infotech upgraded their existing ERP system, Dynamics NAV, to the cutting-edge D365 Business Central on SaaS, supported by ETL implementation (Data Warehousing) on Azure Infrastructure for sales and COGS processes.
- The implementation of this new ERP system has already started yielding substantial improvements in their operational efficiency, eventually resulting in a healthier bottom line for their business.



## Subsidiary of Leading Global Dairy Product Manufacturing Company Successfully Implements Microsoft Dynamics 365 for Finance & Operations On-Premises

### CUSTOMER INFO.

Revenue - Revenue: 14.89 billion USD, Presence: 34+ Countries

- Fifth largest dairy company in the world. It is a co-operative owned by more than 12,500 dairy farmers.
- The client was earlier working on Microsoft Dynamics Navision along with numerous legacy IT systems. The requirement was for a simple user-friendly application with performance, security, scalability & upgradability.
- Cash-flow forecasting and currency requirement calculations
- 40 integration points with Infor WMS & 10 with custom built sales application
- Master Data Management and Business Intelligence features have resulted in elimination of manual data entry into multiple systems and excel spreadsheets.



# Our Locations

## Mumbai

Godrej Infotech Ltd.  
Plant-10, Pirojshanagar, Vikhroli (West)  
Mumbai-400079, India

## Kolkata

Godrej Infotech Ltd.  
Plot-30, Block-GN, Sector - V,  
Bidhannagar, West Bengal - 700091, India.

## Delhi

C/O Awfis, Plot No. A-24/9, Mohan  
Co-operative Industrial Area, New Delhi -  
110044, India.

## Godrej Infotech (Sharjah Branch)

Z 59, Saif Zone, Sharjah, UAE

## Godrej Infotech (Netherlands Branch)

3316 BM Dordrecht, Netherlands

## Chennai

Godrej Road, Sidco Industrial Estate, Ambattur,  
Chennai,  
Tamil Nadu-600053, India.

## Bengaluru

Workafella Business Centre, Unit No. 214, 2nd  
Floor 150, 1, Infantry Rd, Bengaluru - 560001,  
India.

## Godrej Infotech (Singapore Branch)

11 Lok Yang Way, Singapore 628632

## Godrej Infotech Americas Inc.

808 Harris Ave, Austin, TX 78705, USA

